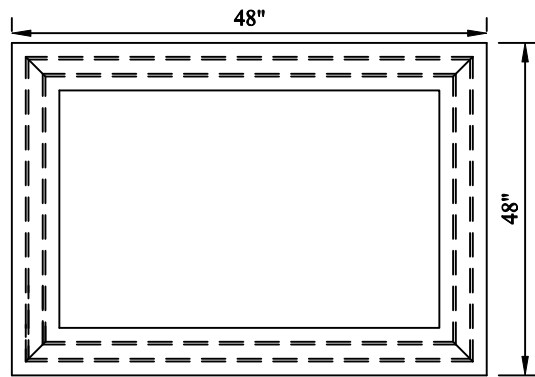
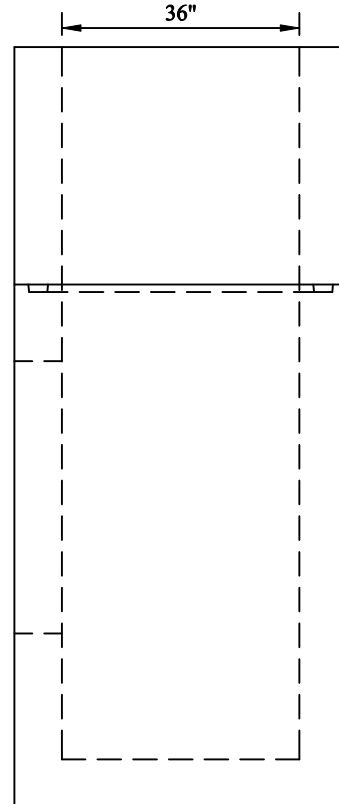
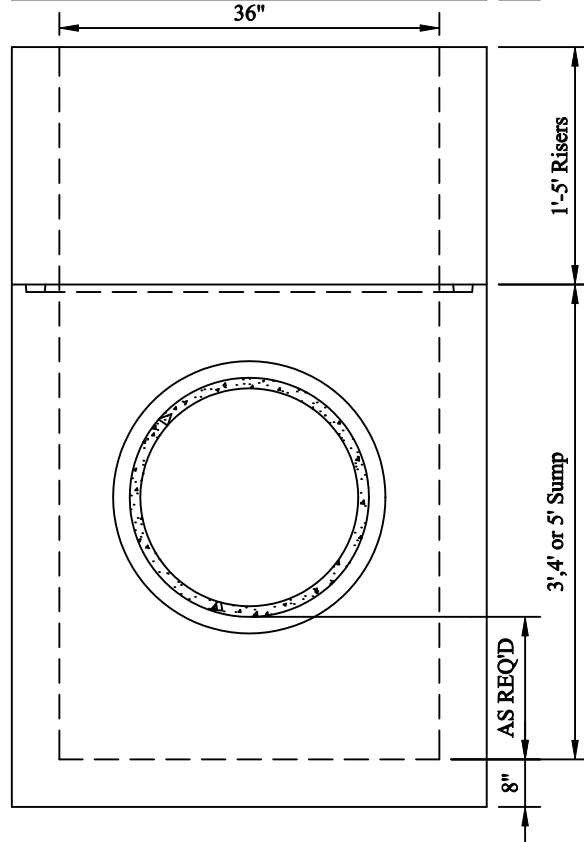


Catch Basins



36" x 36" INSIDE DIMENSIONS
NEW YORK STYLE
CUSTOM HOLE LOCATIONS



NOTES:

1. Minimum Concrete Compressive Strength: 4,000 PSI @ 28 Days.
2. Design Loading: AASHTO HS-20.
3. Steps cast in vertical wall when required.
4. Hole locations and size as required.